

## Specifications

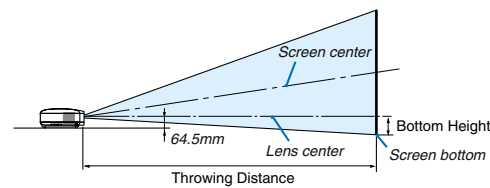
		LT380	LT280
LCD Panel*1		0.8-inch (1,024x768) p-Si TFT LCDx3 active-matrix with MLA Aspect Ratio4 : 3	0.7-inch (1,024x768) p-Si TFT LCDx3 active-matrix with MLA Aspect Ratio4 : 3
Lens		Manual Zoom Ratio : 1 to 1.2	
Zoom		Manual Focus (F=1.7 to 2.0) (f=24.2mm to 29.0mm)	
Focus		Manual Focus (F=1.7 to 2.0) (f=21.8mm to 25.9mm)	
Projection Distance		0.71m to 10.9m (Tele) 0.69m to 9.0m (Wide)	0.72m to 10.9m (Tele) 0.71m to 9.0m (Wide)
Projection Angle		10.3° to 11.2°(Wide) / 8.5° to 9.2°(Tele)	11.5° to 12.1°(Wide) / 9.5° to 10.0°(Tele)
Lamp		200W DC	
Lamp Life*2		152W	
Normal Mode		2,000H	
Eco Mode		3,000H	
Light Output		3,000 ANSI lumens	2,500 ANSI lumens
Normal Mode		2,200 ANSI lumens	
Eco Mode		1,900 ANSI lumens	
Contrast Ratio (White/Black)		600 : 1	
Computer Input		3 Input (2 D-Sub Mini 15pin, DVI-D)	
Quietness		Normal Mode 35 dB	
Eco Mode		30 dB	
Net Weight		Approx. 3.5 kg	
Image Size		21inch to 300inch (0.53m to 7.62m) diagonal	
Maximum Resolution		UXGA (1,600 x 1,200) with Advanced AccuBlend	
Synchronization Range		15kHz to 100kHz (RGB: 24kHz or over)	
Horizontal		48Hz to 120Hz	
Vertical		RGB: 100MHz	
Video Bandwidth		Full Colour, 16.7 Million Colours Simultaneously	
Colour Reproduction		T.M.D.S Specification, Max Resolution: SXGA @60Hz	
Input Terminals		1 DVI-D (LT380 Only & Not With Audio)	
		3 Computer Input	
		2 D-Sub Mini 15pin	
		1 Stereo Mini Jack [Sharing With Computer 1,2&3 (3:LT380 only) Input]	
		3 RCA pin (Green,Blue,Red)	
		2 D-Sub Mini 15pin (Sharing With Computer 1,2&3 Input)	
		2 RCA pin	
		2 Video Input	
		1 S-Video Input	
		1 PC-Card Slot	
1 LAN Port		RJ-45	
Monitor Output		D-Sub Mini 15pin	
Output Terminals		Audio Output Stereo Mini Jack	
Control Terminals		USB Port Type A	
Built-In Speaker		PC Control D-sub 9pin	
Cornerstone Correction		Horizontal Vertical	
Keystone Correction		Horizontal Vertical	
Environment		Operational Temperatures	
Power Requirement		Storage Temperatures	
Input Current		Power Consumption	
Regulations		For United States	
Dimensions (WxHxD)		For Canada	
		For Australia/New Zealand	
		For Europe	

\*1 : LCD Panel technology consists of fine picture cells with more than 99.99% of the cells being active.

\*2 : Lamp life is defined as the average time span for the brightness of the lamp to be reduced by half, it does not refer to the warranty period for the lamp.

All specifications are subject to change without notice.

## Throwing Distance and Image Size



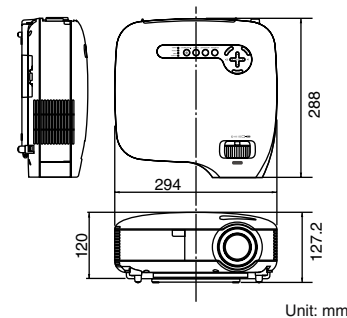
LT380				LT280			
Screen Size (inch)	Throwing distance Wide	Throwing distance Tele	Bottom Height	Screen Size (inch)	Throwing distance Wide	Throwing distance Tele	Bottom Height
30	0.9m	1.0m	64mm	30	0.9m	1.0m	47mm
40	1.2m	1.4m	86mm	40	1.2m	1.4m	62mm
60	1.8m	2.1m	129mm	60	1.8m	2.1m	93mm
80	2.4m	2.8m	171mm	80	2.4m	2.8m	125mm
100	3.0m	3.6m	214mm	100	3.0m	3.5m	156mm
120	3.6m	4.3m	257mm	120	3.6m	4.3m	187mm
150	4.5m	5.4m	322mm	150	4.5m	5.4m	234mm
200	6.0m	7.2m	429mm	200	6.0m	7.2m	311mm
300	9.1m	10.9m	643mm	300	9.0m	10.8m	467mm

The actual throwing distance may vary within plus or minus 5%. The indicated distance is a design value only.

## Remote Control



## Dimensions



Unit: mm

## Soft Case

(basic accessory)



## Options



Wireless LAN Card  
NWL-100A : For North America & Mexico, Taiwan.  
NWL-100E : For Europe, Asia, Australia & New Zealand.  
(For details, refer to the NEC website)  
<http://www.nec-pj.com>

KEKI-0509-171RR



## Portable Projector

Empowered by Innovation

NEC

# LT380/LT280

High brightness, multi function LCD projector with LAN support provides effective, impressive presentations for conferences and educational seminars



- Lightweight: 3.5 kg
- High brightness: 3000 ANSI lumens (LT380), 2500 ANSI lumens (LT280)
- XGA (1024 x 768 dots) resolution
- Automatic Vertical Keystone Correction and 3D Reform function
- Wall Colour Correction
- High-Speed Wireless & Wired LAN Capability
- Security functions





# LT380/LT280

LAN

3000 ANSI lm  
LT380

Multi Function

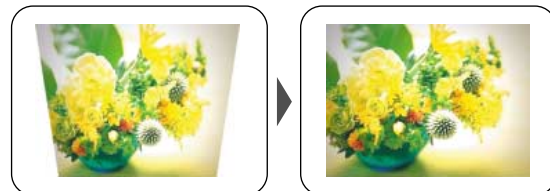
## High brightness

Although it has a highly transportable, lightweight body weighing 3.5 kg, it achieves high brightness of 3000 ANSI lumens, which is sufficient for use in a bright room. (This is for the LT380. The brightness is 2500 ANSI lumens for the LT280.)

## Automatic Vertical Keystone Correction and 3D Reform function

If the position of the screen is too high or low, the projector must be installed at an angle, resulting in trapezoidal distortion of the projected images. The acceleration sensor built into the main unit senses the inclination of the unit in the vertical direction and then corrects for any trapezoidal distortion in the projected images automatically (+/- 40 degrees from the projection angle). The user can set up the projector very quickly and easily since it is not necessary to correct it manually. With the 3D Reform function, it is also possible to correct trapezoidal distortion manually by clicking the four corners of the projected image with a mouse connected to the main unit to project square images.

Automatic Vertical Keystone Correction



3D Reform function



## Wall Colour Correction

Without a screen, the projected images may be affected by the colours of the wall or blackboard. This projector has built-in colour correction for projecting images on a coloured wall or blackboard, so that the colour tones of the projected images can be approximated to those projected on a white screen. The following eight colour options are available as user selections: blackboard, blackboard (gray), light yellow, light green, light blue, sky blue, light rose and pink.



## High-Speed Wireless LAN (IEEE802.11b/g) and Wired LAN (RJ-45 10BASE-T/100BASE-TX) Capability

Images on the PC display can be projected without a connecting cable by installing Image Express Utility 2.0 (IEU 2.0) on the PC as well as loading the wireless LAN card (option) on the projector respectively. IEU 2.0 is dedicated software that is attached to the projector. The projectors support IEEE802.11g in addition to the ordinary IEEE802.11b. Smoother image projection has been achieved by the unique compression method developed by NEC. The projectors support wired LAN with an integrated RJ-45 connector.

## Low Noise 35/30 dB

By selecting the power saving "Lamp Eco Mode", power consumption can be saved and noise level can be reduced to 30 dB, so that the user can hold conferences or classes in a quiet environment without noises from the fan (35 dB in normal use).

## Security function prevents unauthorized use or theft

By using passwords, the projector cannot be used by unauthorized persons. Once the security function is in effect, a message requesting the password is displayed when the power of the main unit is turned on. It is impossible to project an image unless the proper password is entered.

## Wireless LAN functions

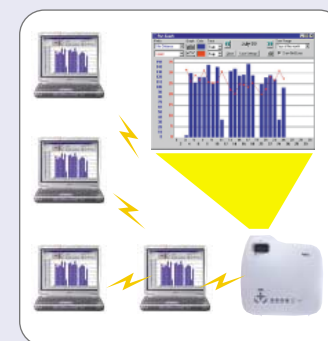
High-speed, high-quality image transfer in a wireless environment by Image Express Utility 2.0 (Ver. 2.0)

### A presenter (a PC transmitting images to the projector) can be switched

With an ordinary projector, it is necessary to reconnect the RGB cables when the presenter changes. Conversely, this projector can change presenters with a single operation. The person who wants to speak can send images from his/her PC to the projector just by clicking the "Become a Presenter" button.

### Images transmitted from a PC to the Projector can be monitored with other PCs

A presenter can transmit images to not only the projector but also participants' PCs. For a presentation in a large conference room, participants can confirm details of the projected images, such as small characters, etc., with their own PCs. A presenter can distribute files or documents used in the presentation through the network.



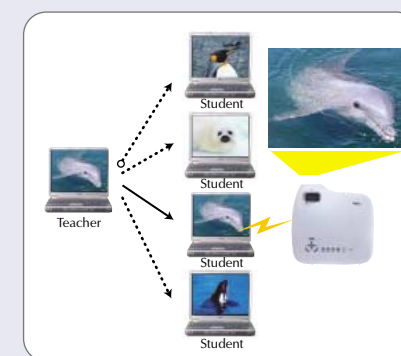
### Projected images can be stored in memory and notes can be added in a text field.

In addition to viewing the projected images on your own PC, you can also store the images on your PC. Since some margin space is available, you can take notes or provide the minutes of a meeting.



### Training mode

An administrator (a teacher) can switch images on the participants' (students') PCs to be projected on a screen. With the Training mode, a single PC can control PCs that project images onto a screen. You can switch the PCs that project image or pause communication with the projector.



### Extend supported network form

#### Supporting a meeting over multiple segments

With Image Express Utility 2.0 (Ver. 2.0), it is possible to conduct meetings over segments and across different networks. Since the projector supports a variety of network configurations, it can easily be introduced into environments where networks have already been constructed.

#### The Automatic Search function searches for network projectors

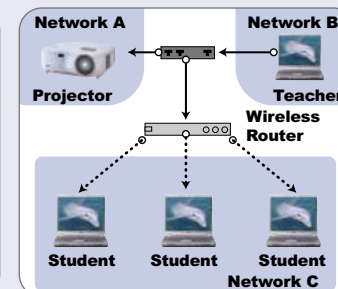
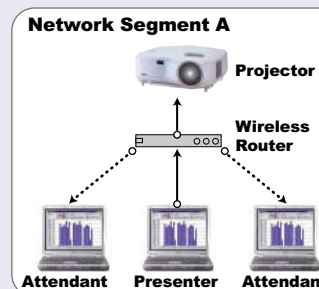
Even if the desired projector is on another network, it can be found with the Automatic Search function.

#### Image Express Utility 2.0 (Ver. 1.0) of the previous version

"Meeting" is available in the same network.

#### Image Express Utility 2.0 (Ver. 2.0) of the new version attached to the current models

"Meeting" is available over network segment.



### Multiple IN/OUT terminals

The projector is equipped with a number of input/output terminals, including component (RCA) and a PC card slot (for viewing digital images such as JPEG and BMP) as well as DVI-D\* to support a variety of image sources.

\*DVI-D : LT380 only



LT380